



GENESEE
LAND TRUST

(585) 256-2130
Geneseelandtrust.org

Eva & Harlan Braman Preserve

1775 Ridge Road, Webster, NY 14580 | 71 Acres



Birding



Recreation



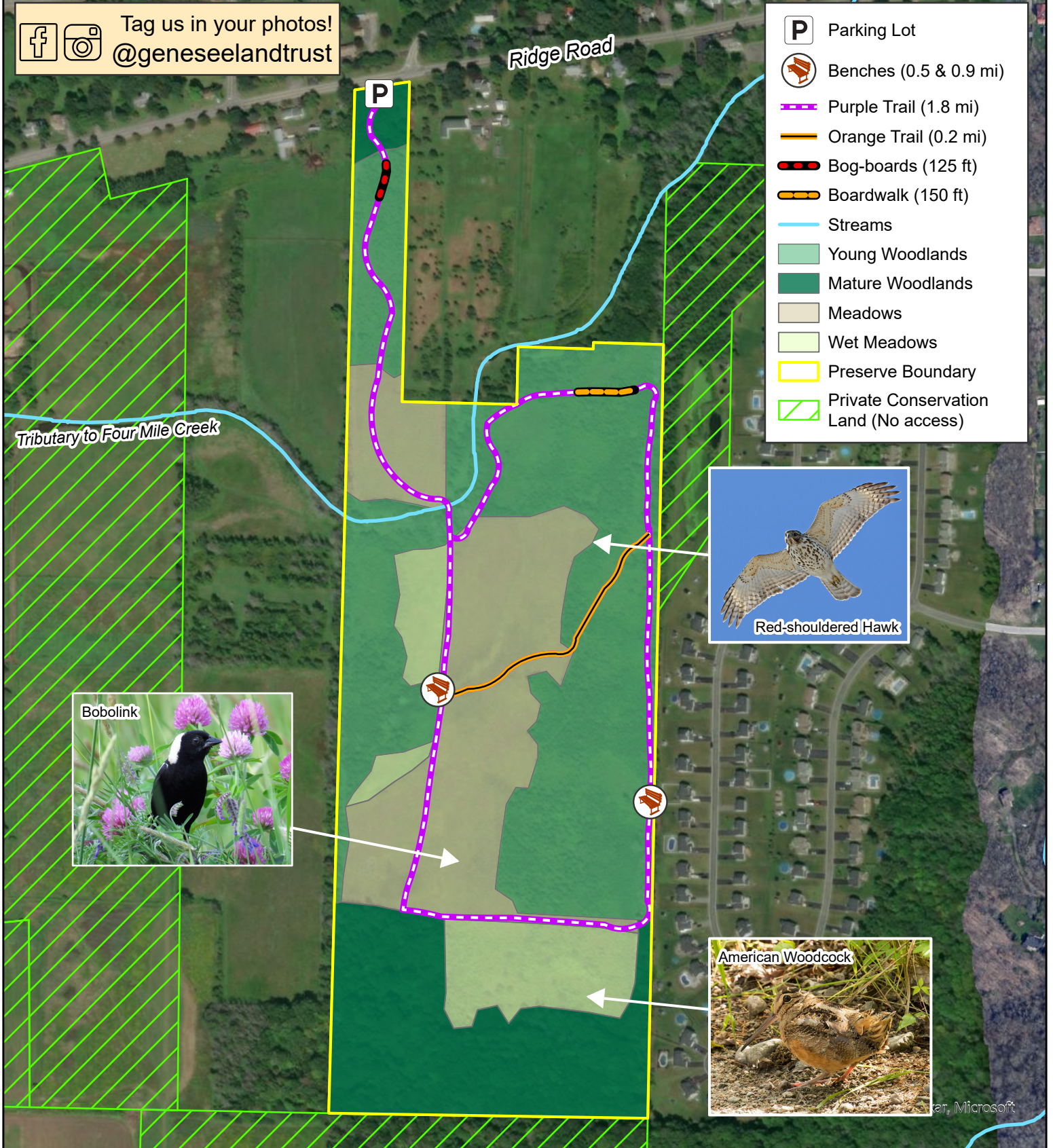
Habitat



Leashed Dogs



Tag us in your photos!
@geneseelandtrust



Parking Lot



Benches (0.5 & 0.9 mi)



Purple Trail (1.8 mi)



Orange Trail (0.2 mi)



Bog-boards (125 ft)



Boardwalk (150 ft)



Streams



Young Woodlands



Mature Woodlands



Meadows



Wet Meadows



Preserve Boundary



Private Conservation Land (No access)



Red-shouldered Hawk



Bobolink



American Woodcock